

How to install the software in Windows Vista and 7

Our software CD will guide you to install the time management software in Windows XP or earlier versions automatically. But if you want to install the software in Windows Vista, please follow the instructions below:

For WINDOWS VISTA and 7:

1. Please note that Microsoft MSDE database (in the software CD) is **not** compatible with WINDOWS VISTA. You need to install Microsoft SQL 2005 Express Edition.

Instructions

Note: You must have administrative rights on the computer to install SQL Server Express.

Step 1: Download and install [Windows Installer 3.1](#). (You do not need to install it if it is already in your pc. Go to control panel-programs to check.)

Step 2: For 32-bit platforms, download and install [the 32-bit version of Microsoft .NET Framework 2.0](#). For 64-bit platforms (x64 and EMT64 only), download and install [the 64-bit version of Microsoft .NET Framework 2.0](#). (You do not need to install it if it is already in your computer.)

Step 3:

For 32-bit vista and 7, click www.lonestargrp.com/SQLEXP32.EXE

For 64-bit vista and 7, click www.lonestargrp.com/SQLEXP32.EXE

To start the installation immediately, click **Run**. To install SQL Server Express at a later time, click **Save**. SQLExpr.exe is a self-extracting installation package of SQL Server Express.

2. You **must** follow the instructions from page 2-24 in this document.

You can also download it from www.lonestargrp.com/microsoft-sql-2005.pdf [case sensitive, you may copy the link to your browser.].

3. Please go to the software CD/A1, double click SETUP.EXE to install the attendance management software, and then go to "Software quick setup" for instructions.

You can also click the link www.lonestargrp.com/A1_Setup_1_1_0_688.exe (Case Sensitive) to download the software and connect it Microsoft SQL 2005 database.

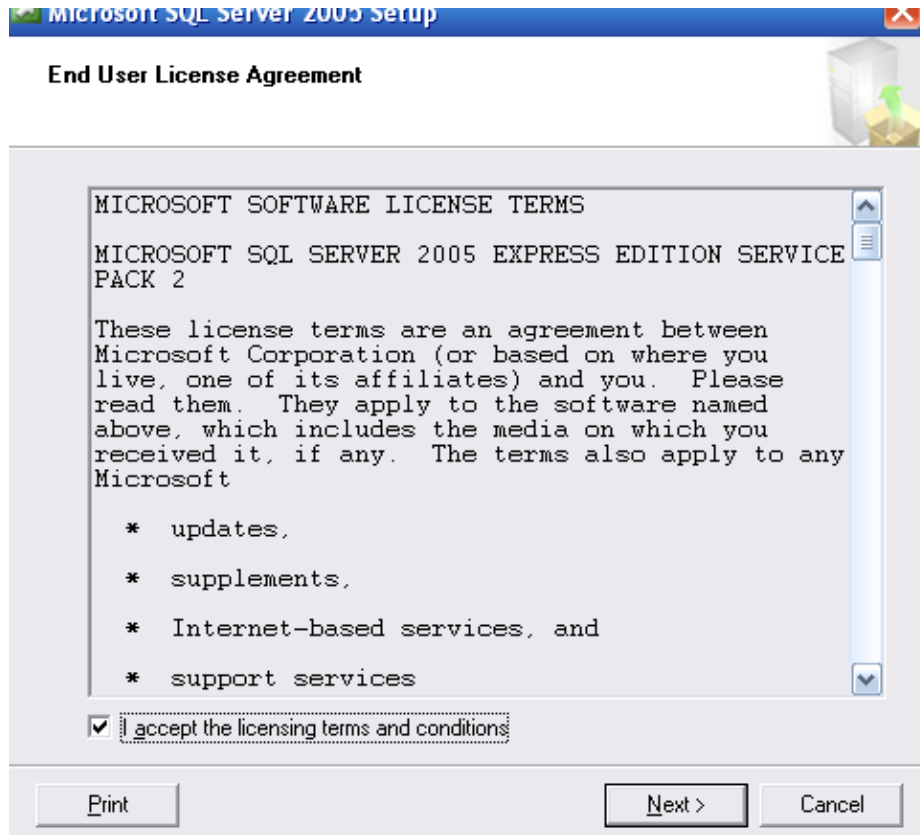
Microsoft SQL server 2005 express edition and new software connection guide
FOR WINDOWS VISTA and 7

Note: This guide is temporary. You can go to LS-836 support at www.lonestargrp.com for the latest update in the near future.

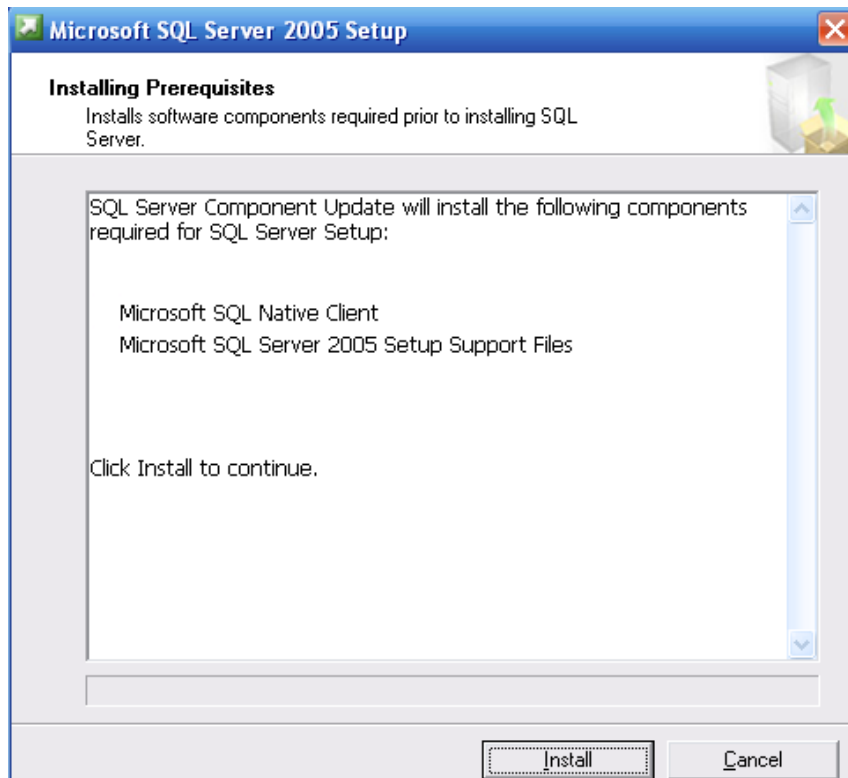
Content

SQL 2005 and New software installation.....	Page 3
Trouble Shooting.....	Page 20
How to uninstall SQL 2005.....	Page 23

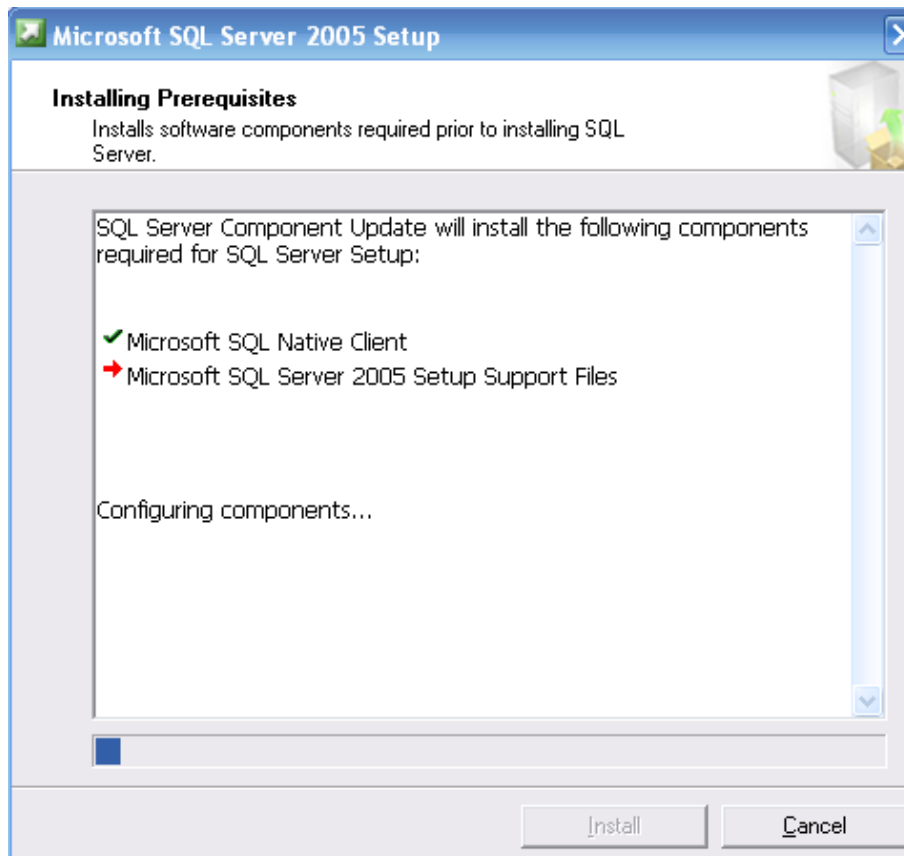
1. Click the link www.lonestargrp.com/SQLEXP32.EXE (Case Sensitive) to install the database.



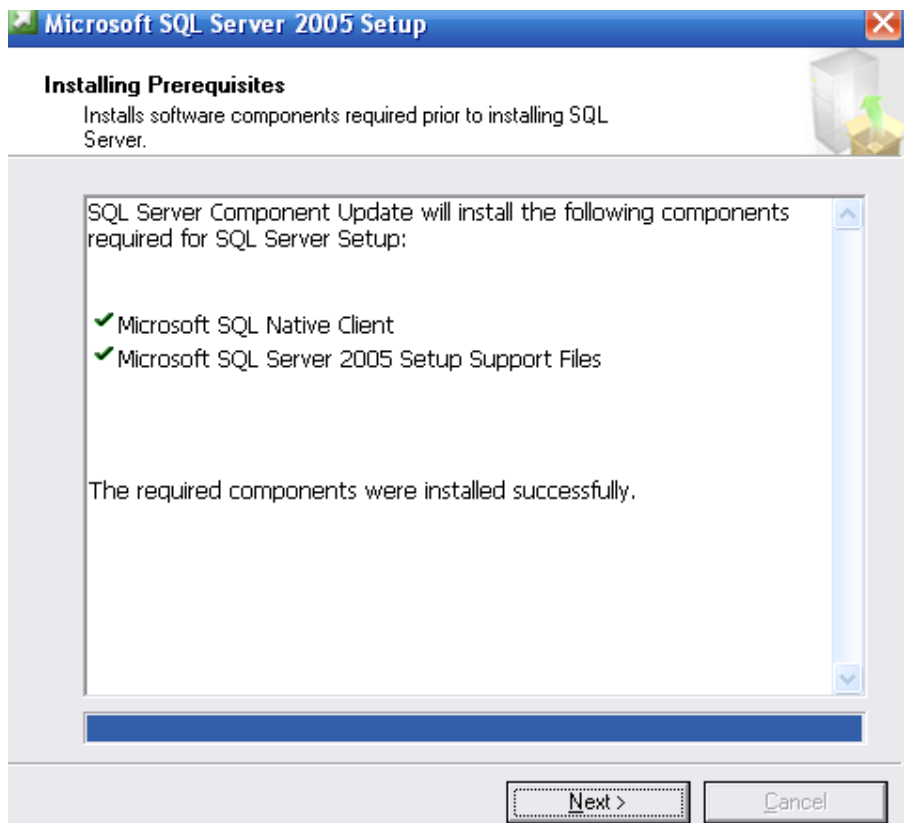
- 2.



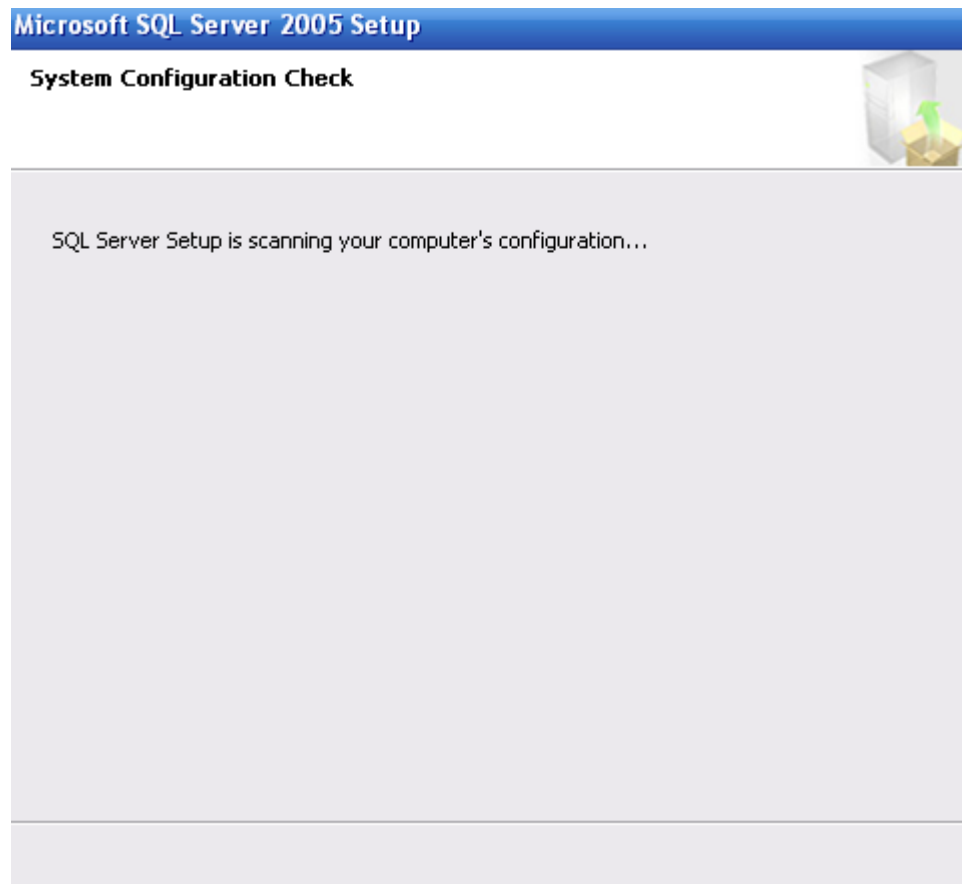
3.



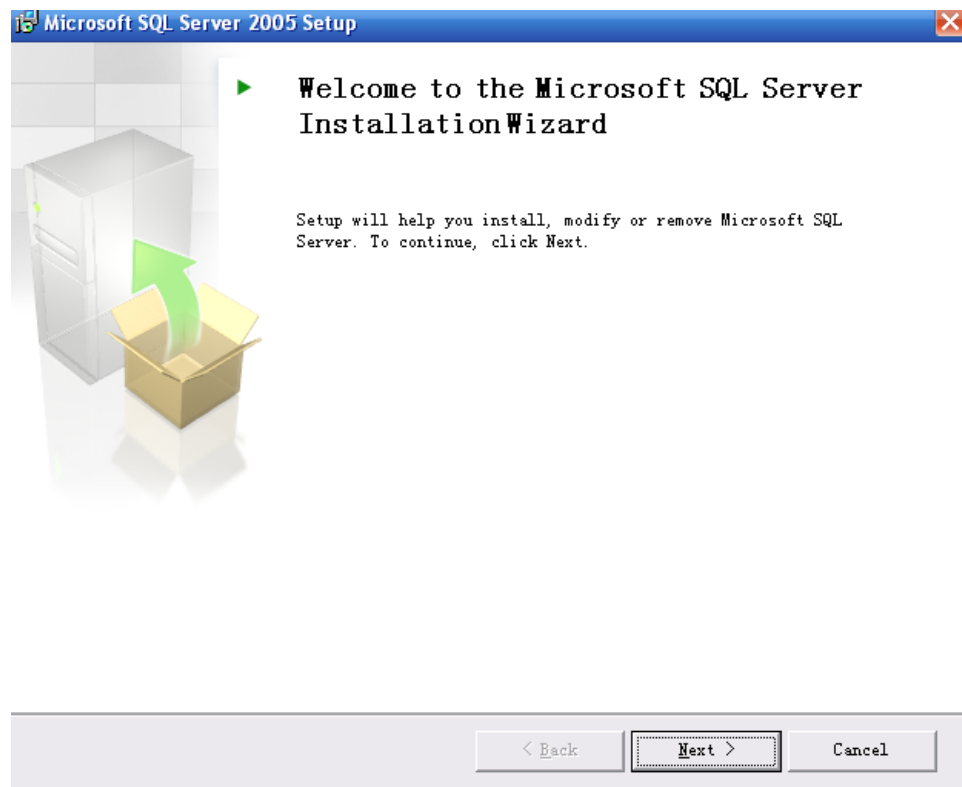
4.



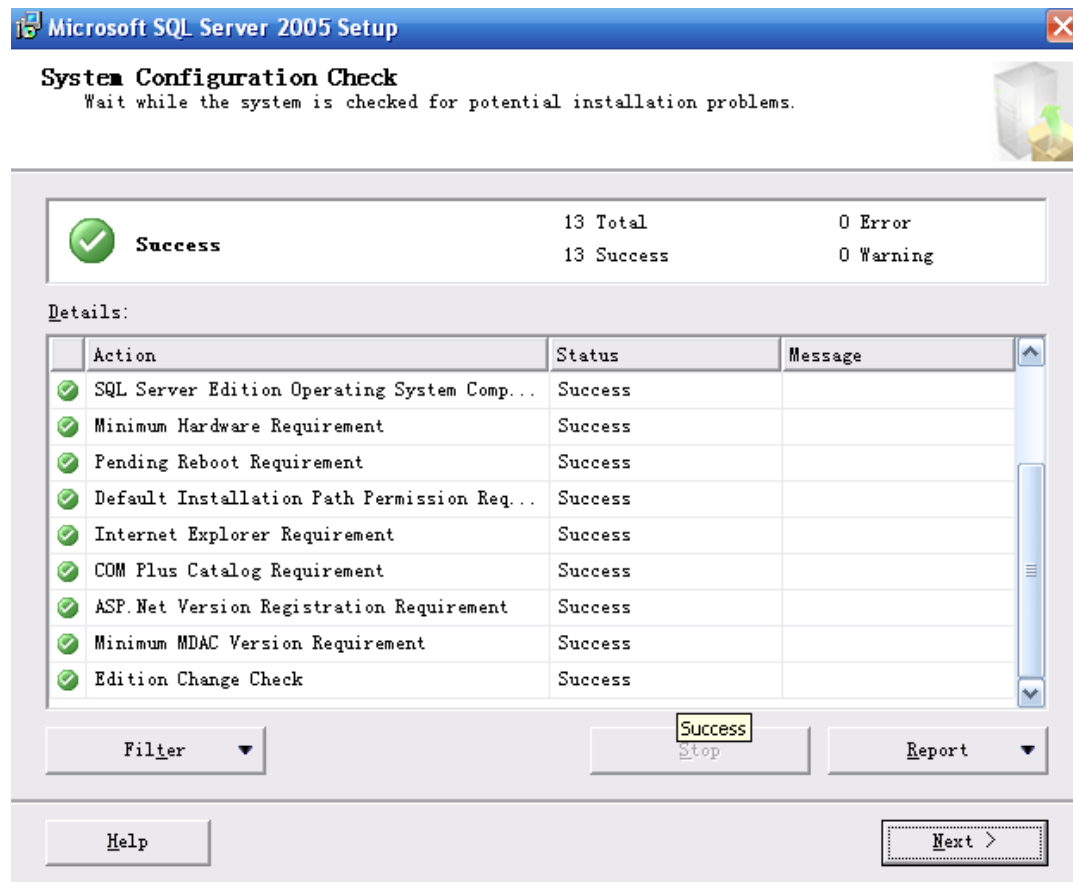
5.



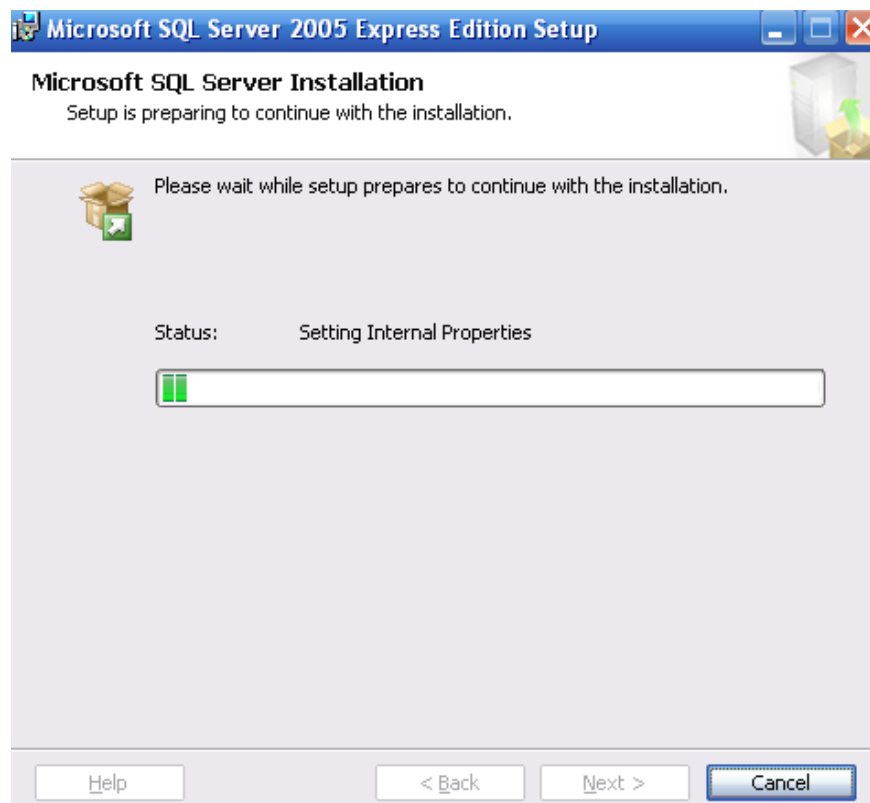
6.



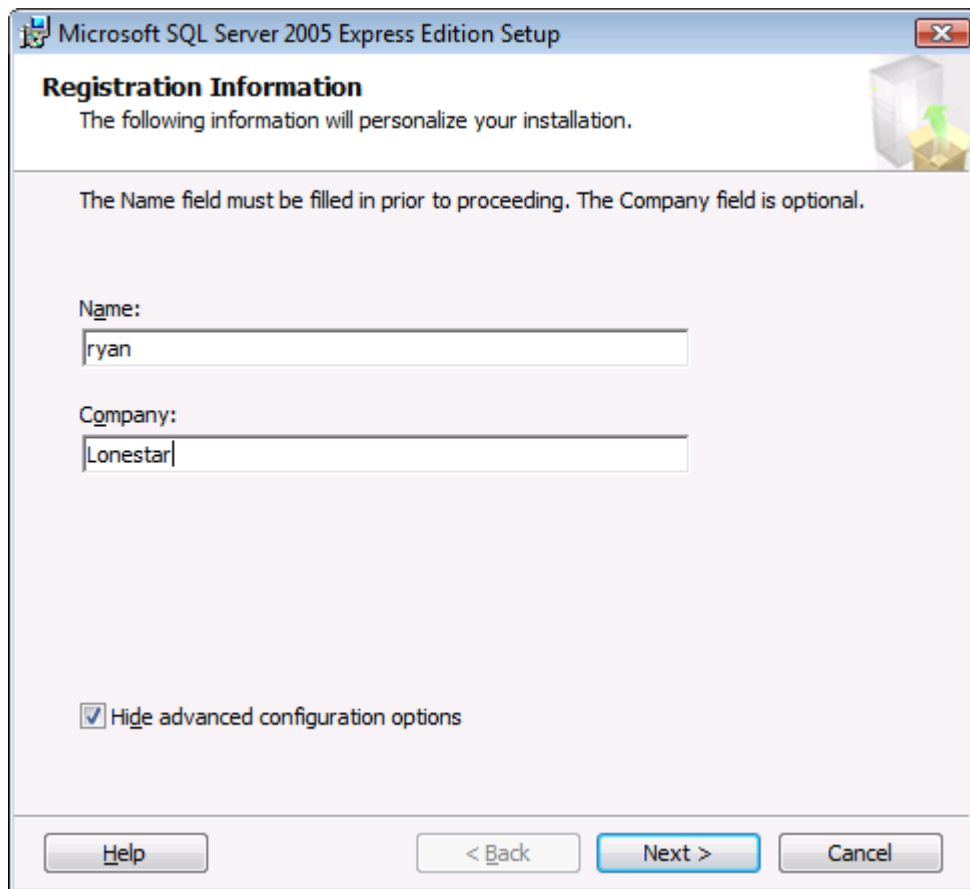
7.



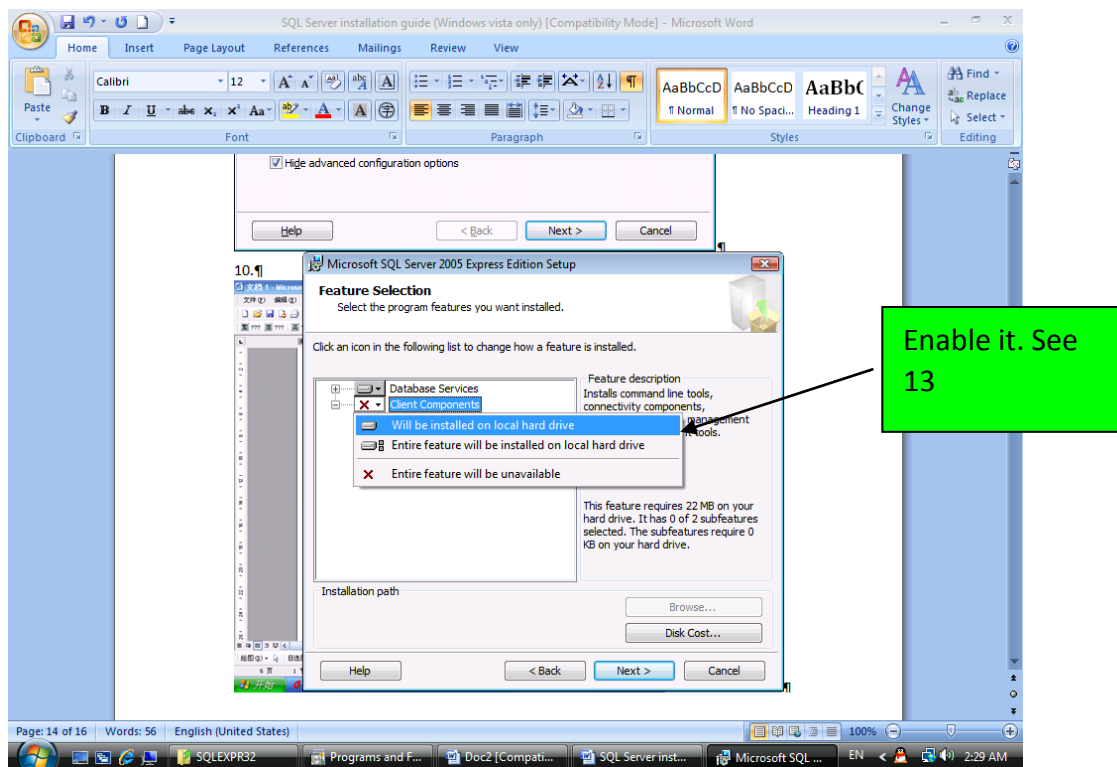
8.



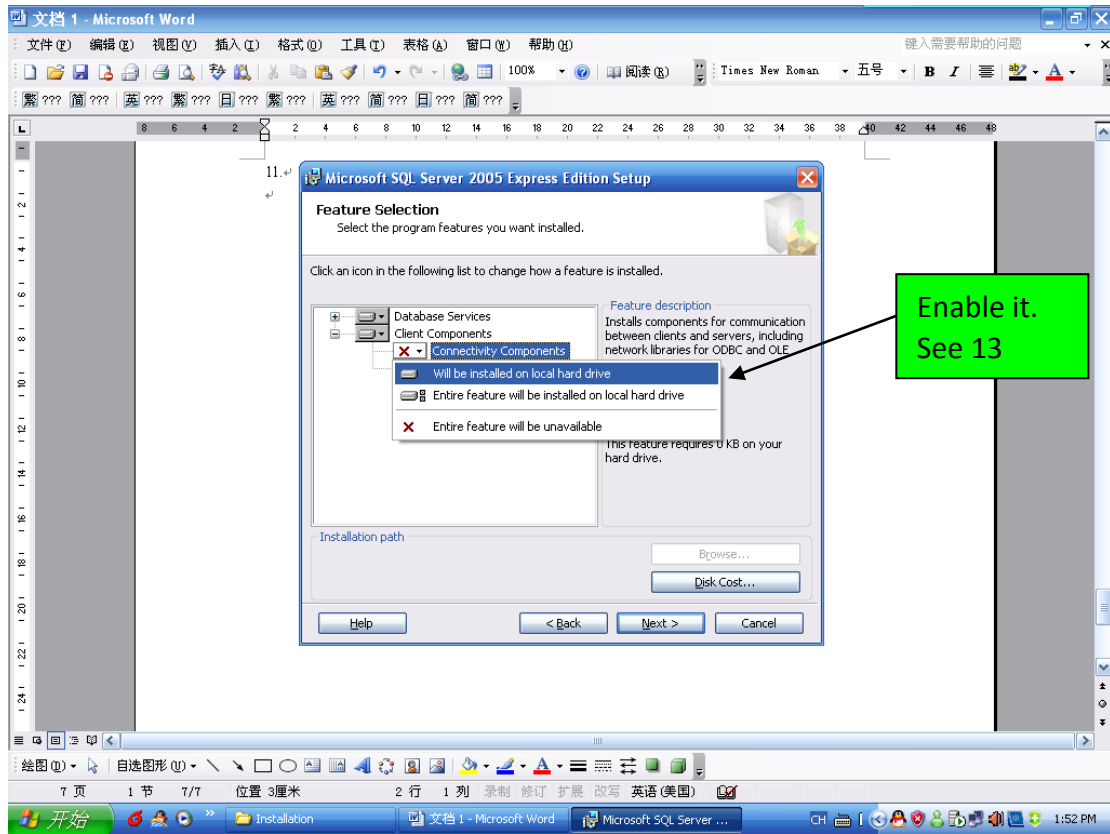
9.



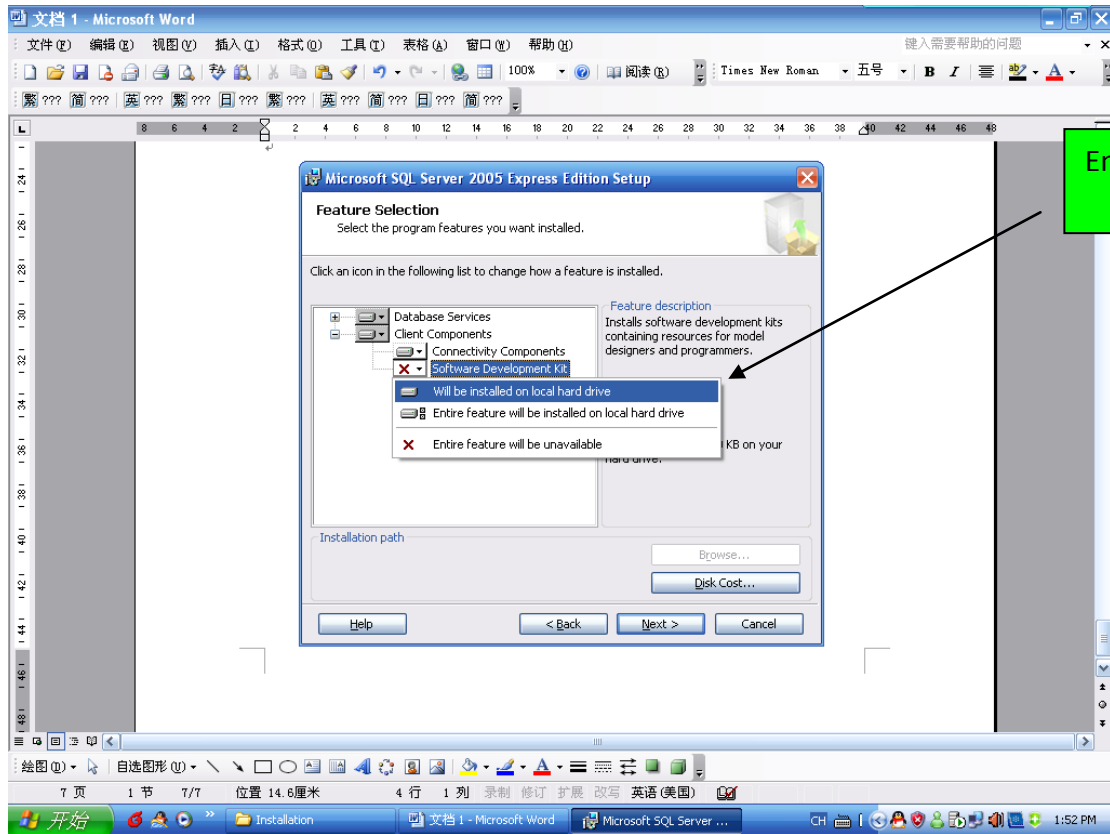
10.



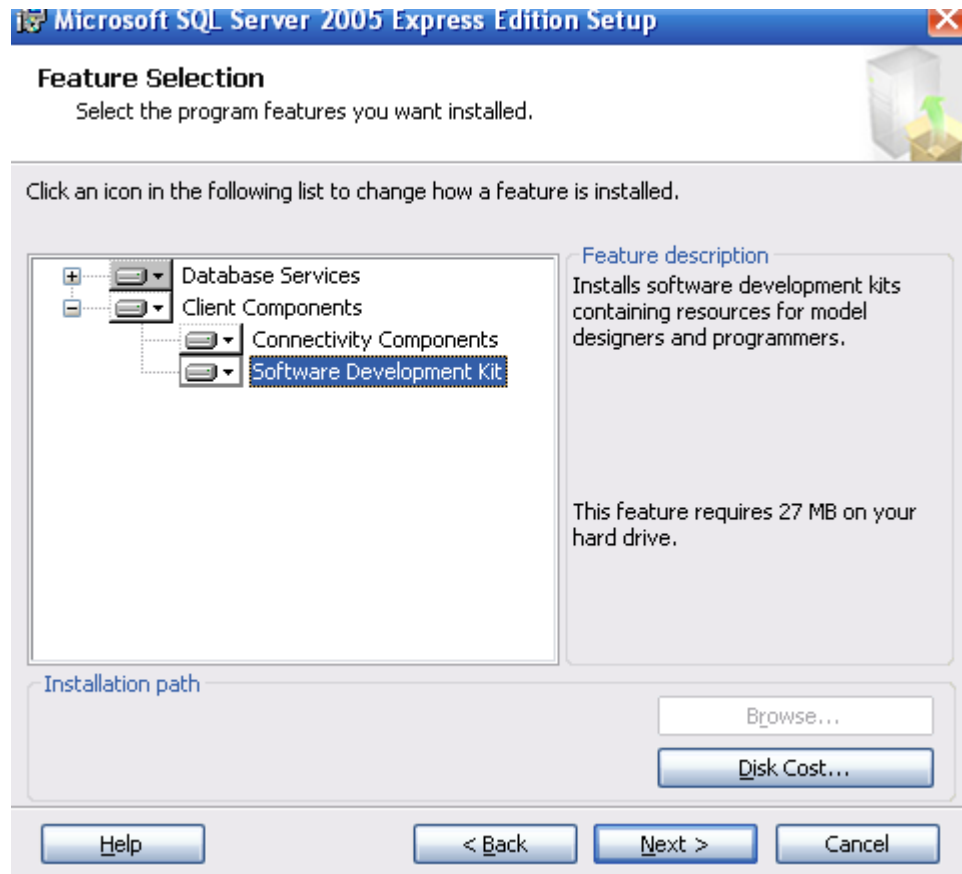
11.



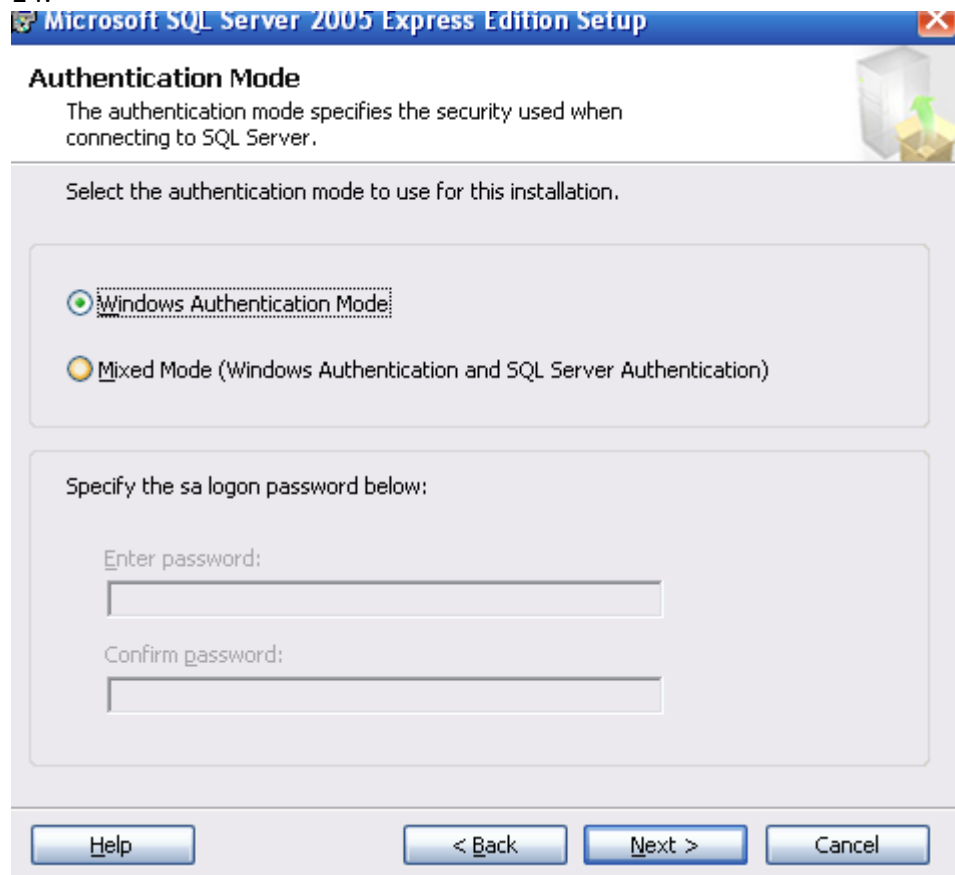
12.



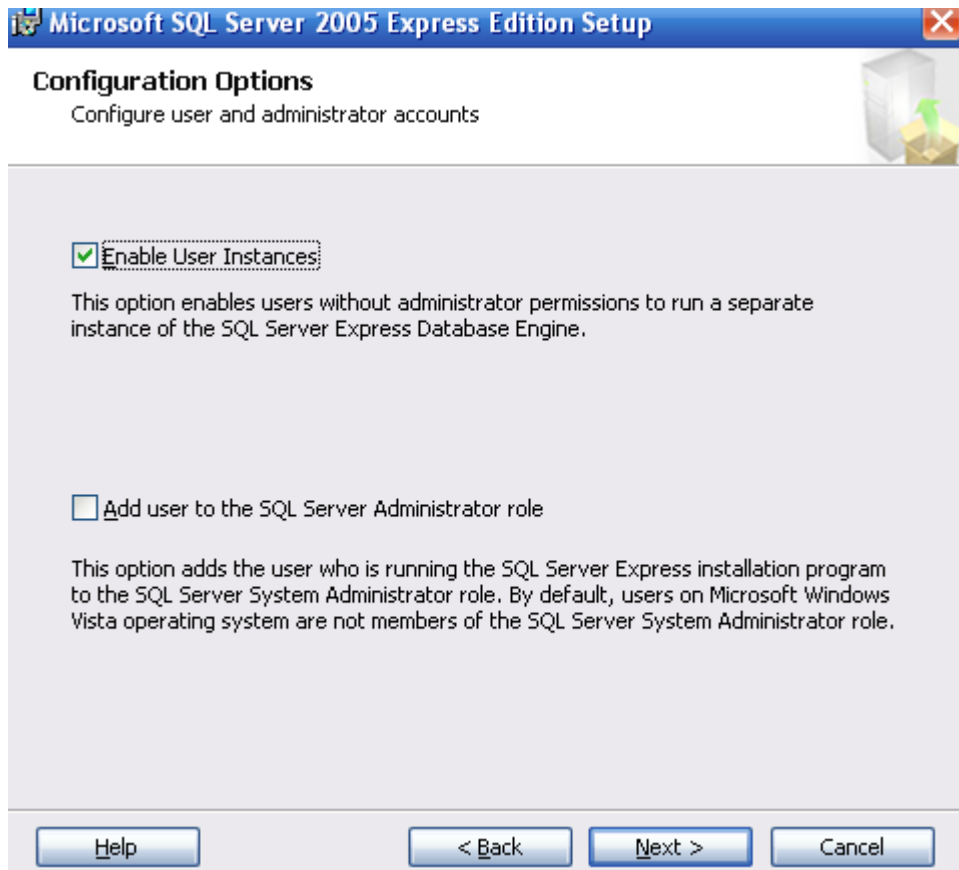
13.



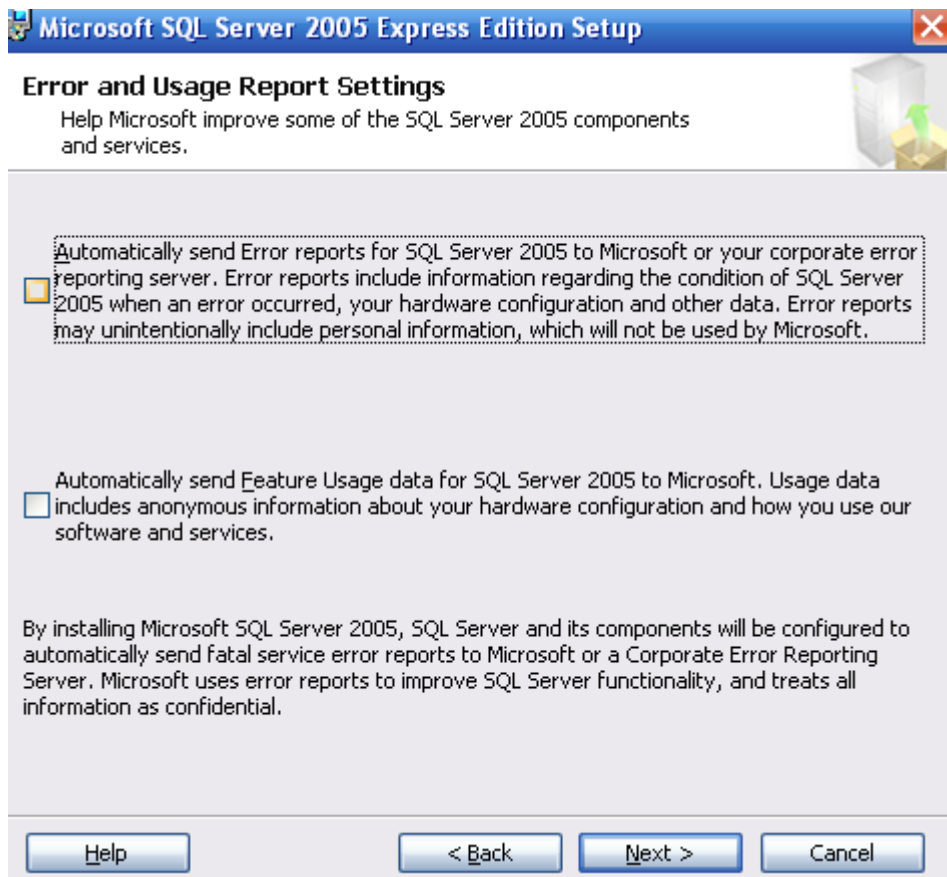
14.



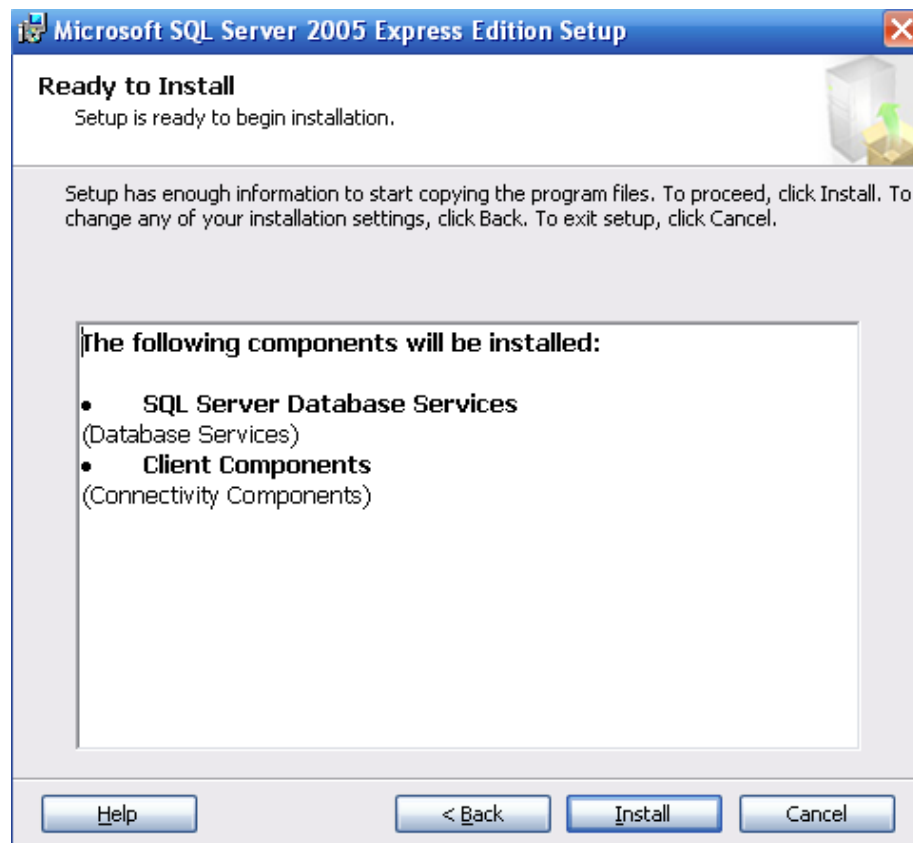
15.



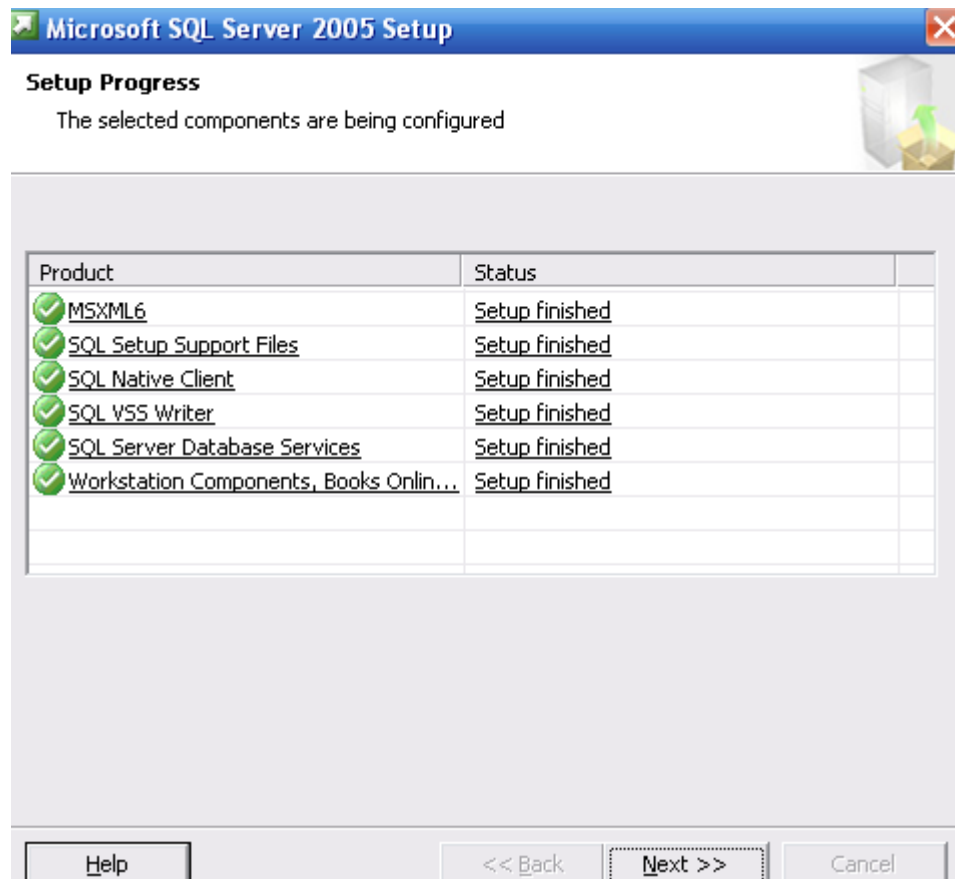
16.



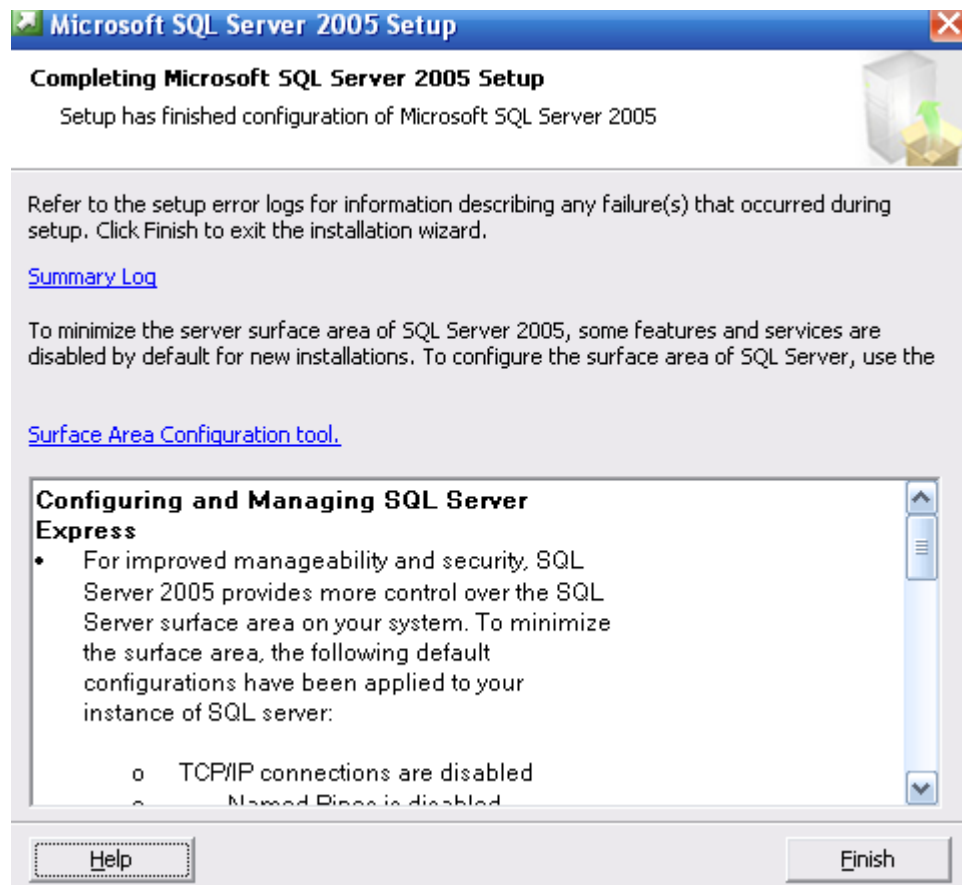
17.



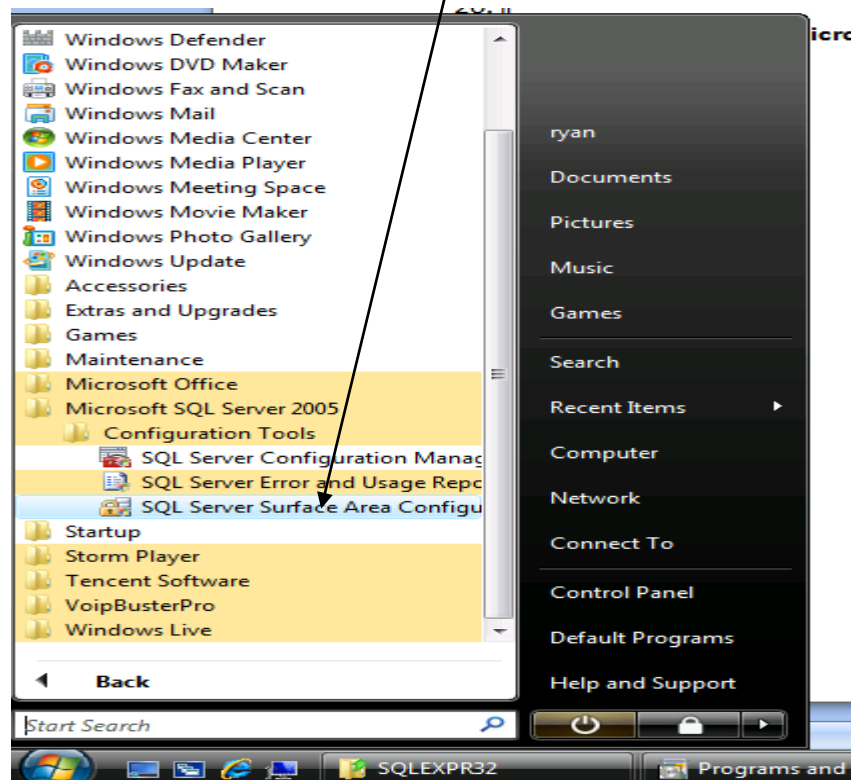
18.



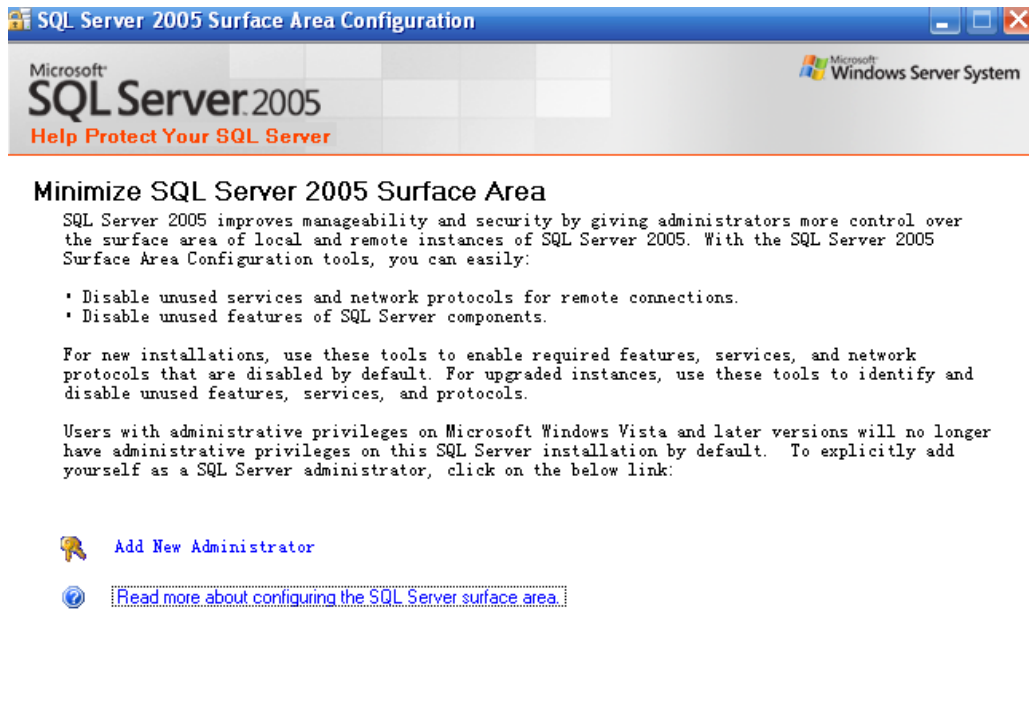
19.





20. **Click Start-All Programs-Microsoft SQL Server 2005--SQL Server Surface Area Configuration:**



21.



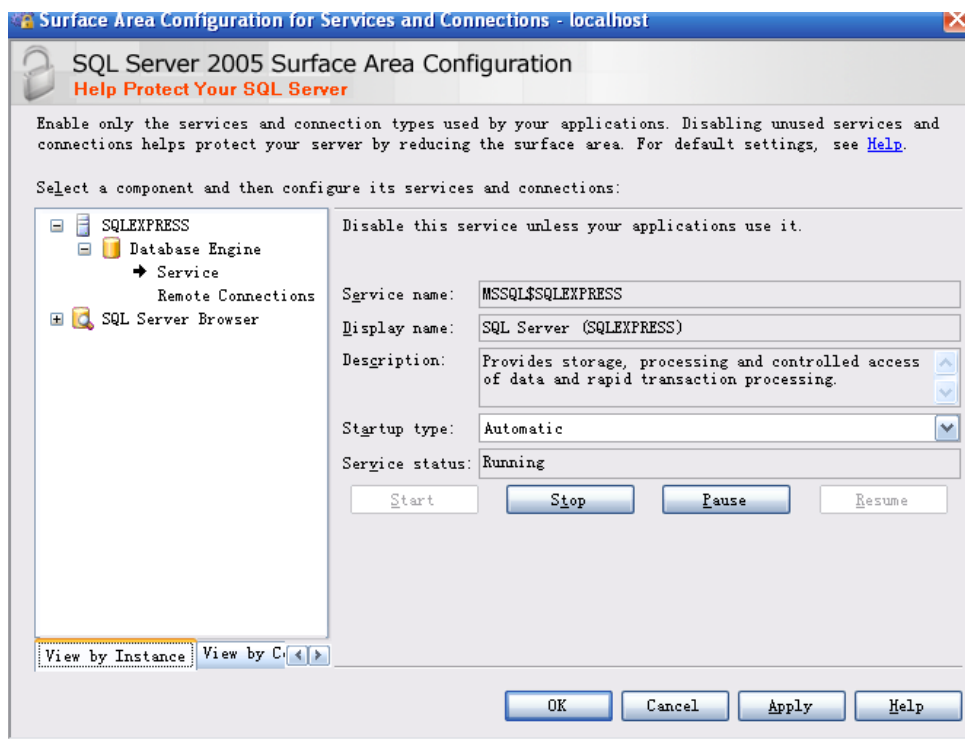
Configure Surface Area for localhost ([change computer](#))

-  [Surface Area Configuration for Services and Connections](#)
-  [Surface Area Configuration for Features](#)

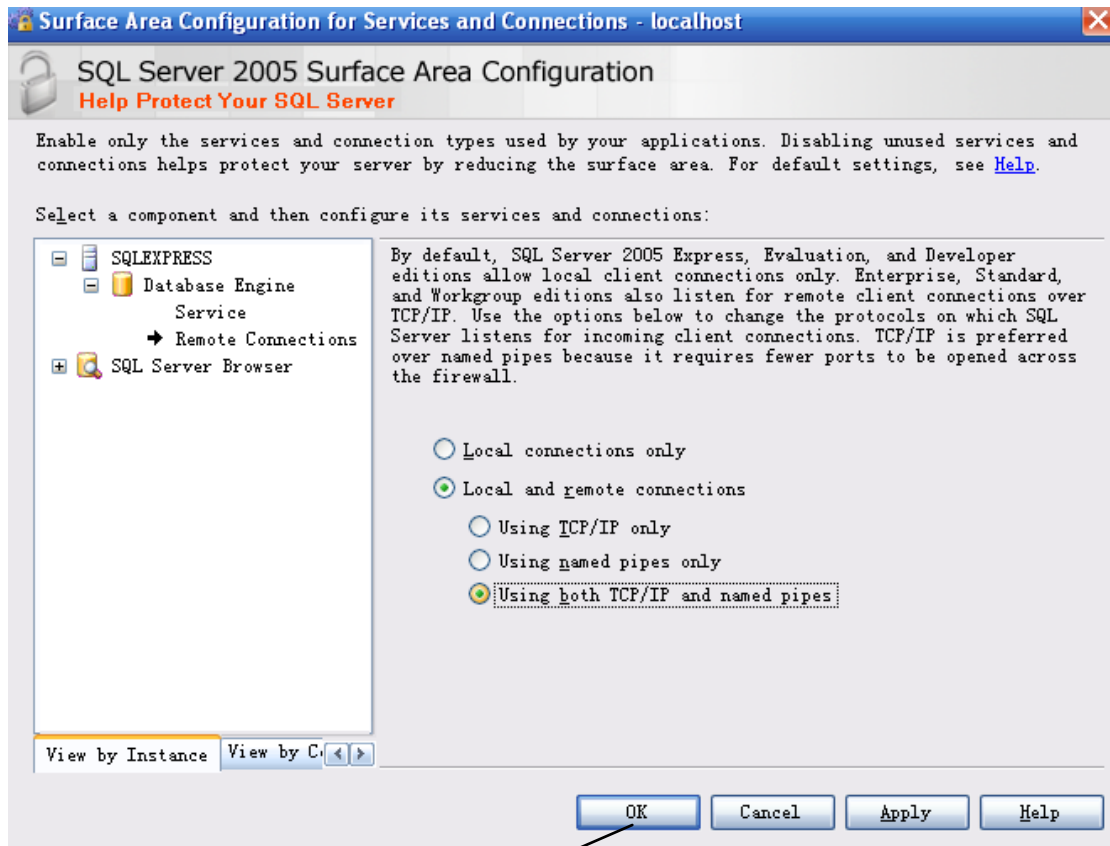
Click here first, see 22, 23.

And then click here, see 24, 25.

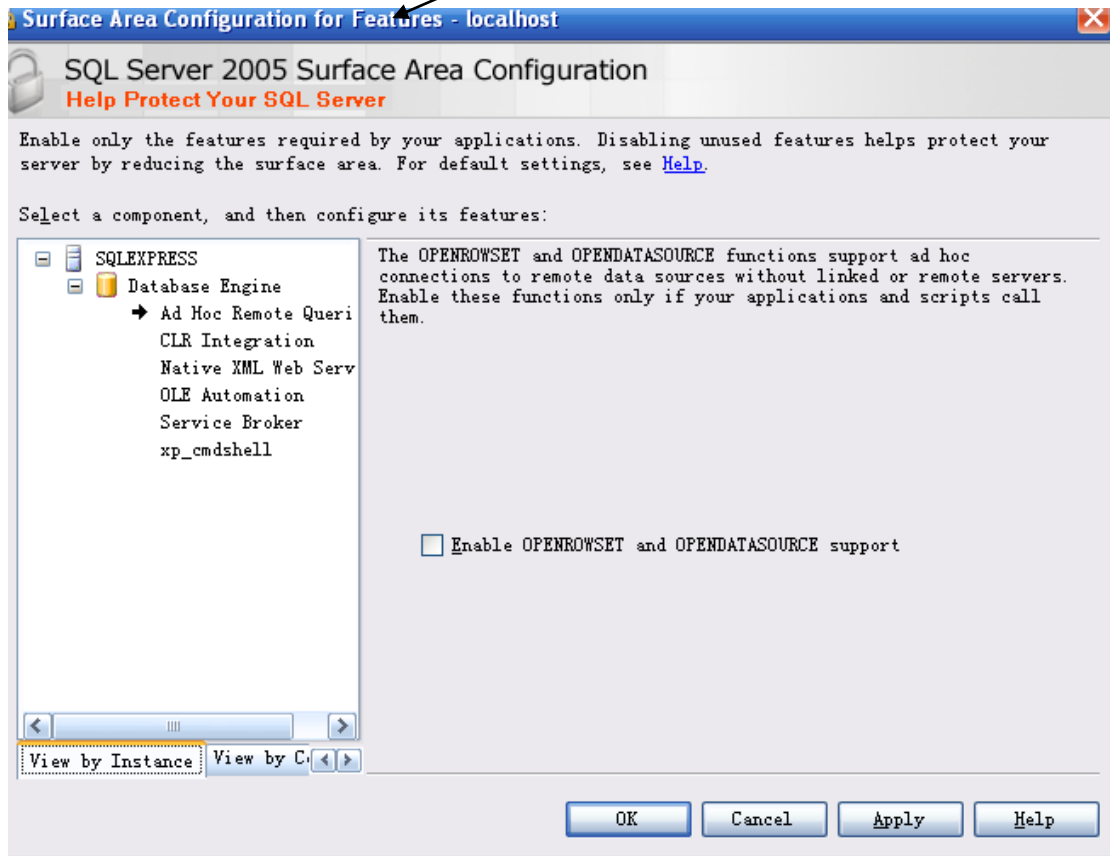
22.



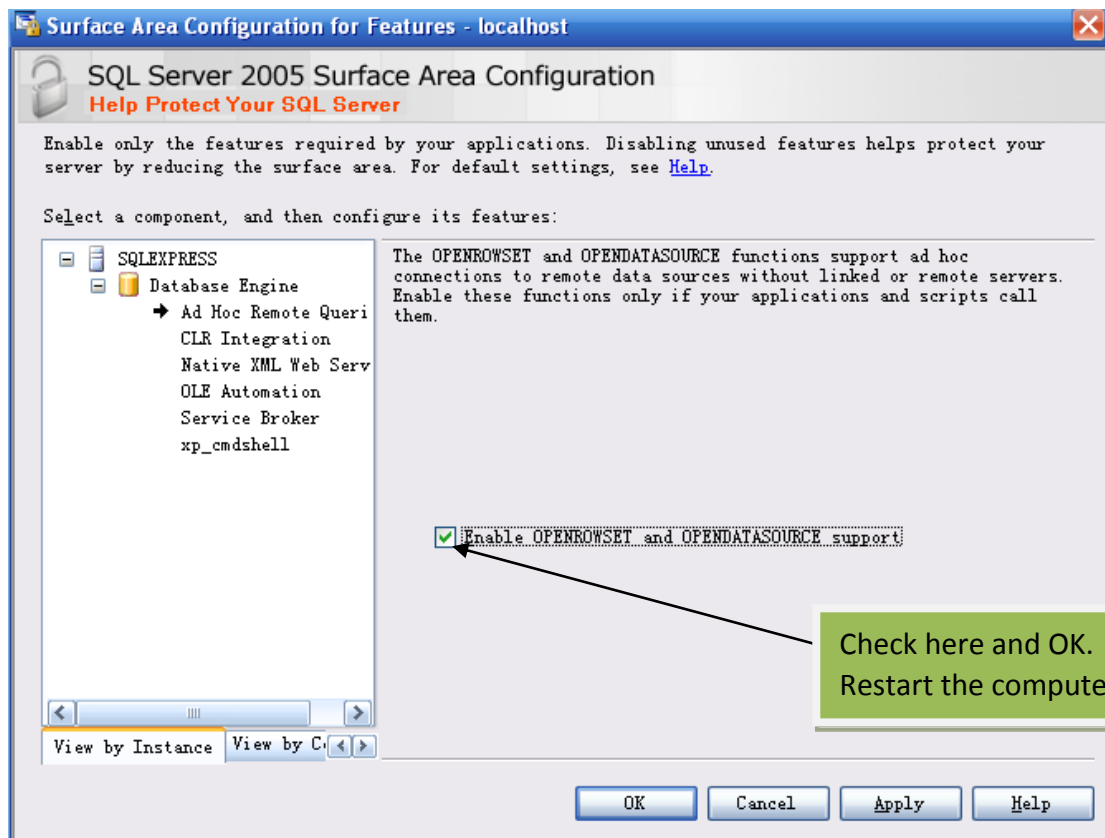
23.



24.

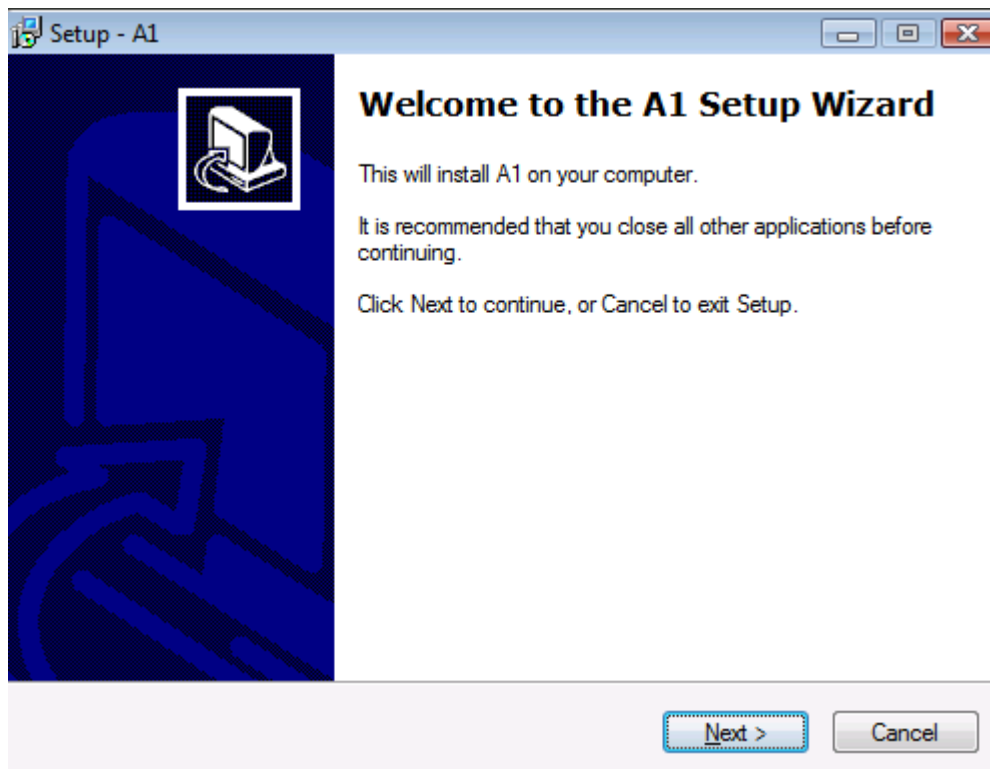


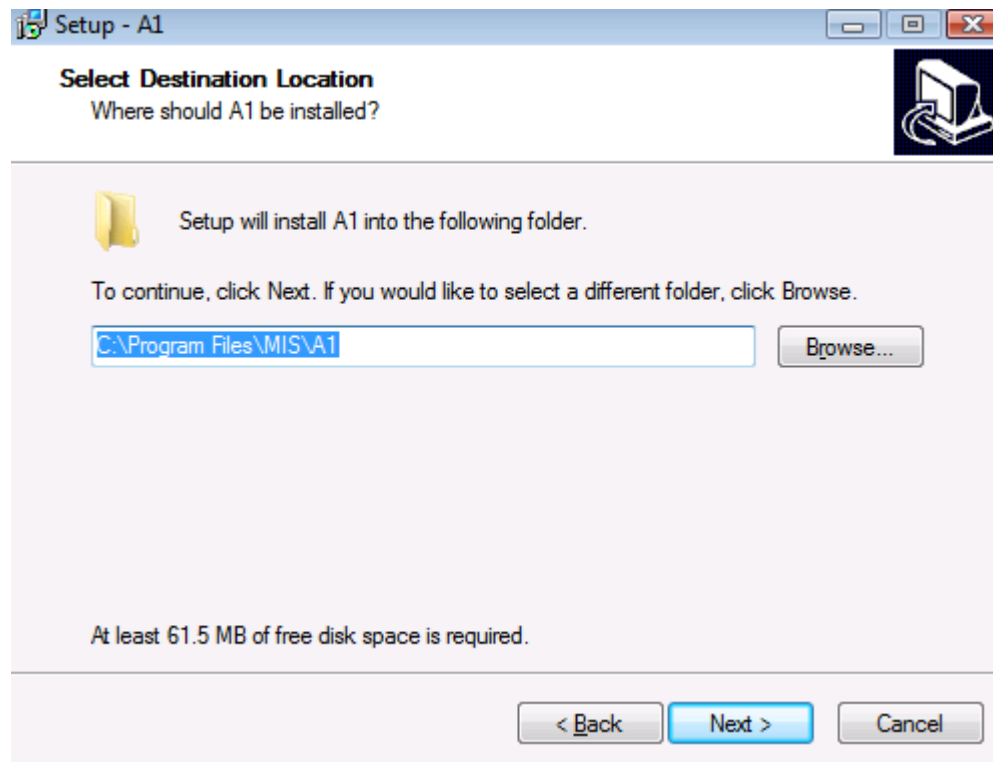
25.



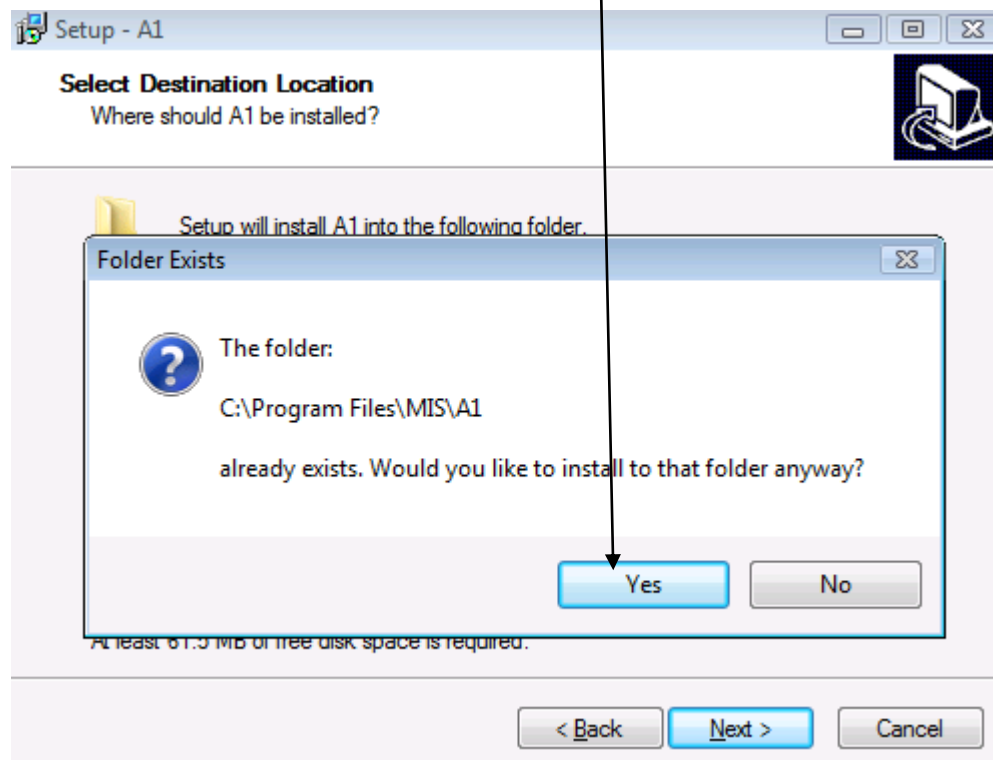
26.

Click www.lonestargrp.com/A1_Setup_1_1_0_688.exe (Case Sensitive) to download the new software A1 and double click to setup.

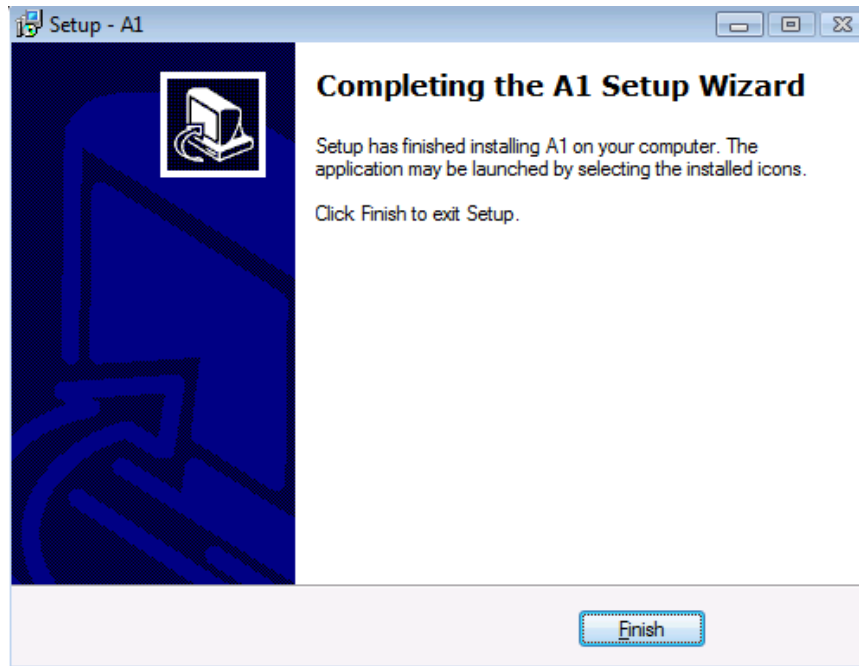




28. if the folder already exists, you can overwrite it by clicking yes. If not working, you can right click A1_Setup_1_1_0_688.exe and then click Run as administrator.

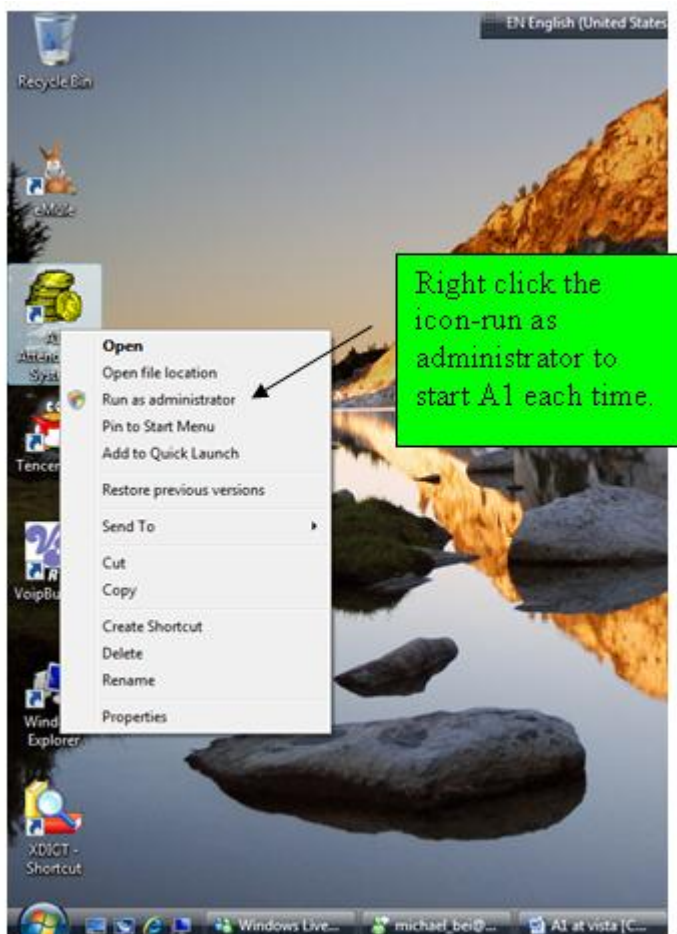


29.



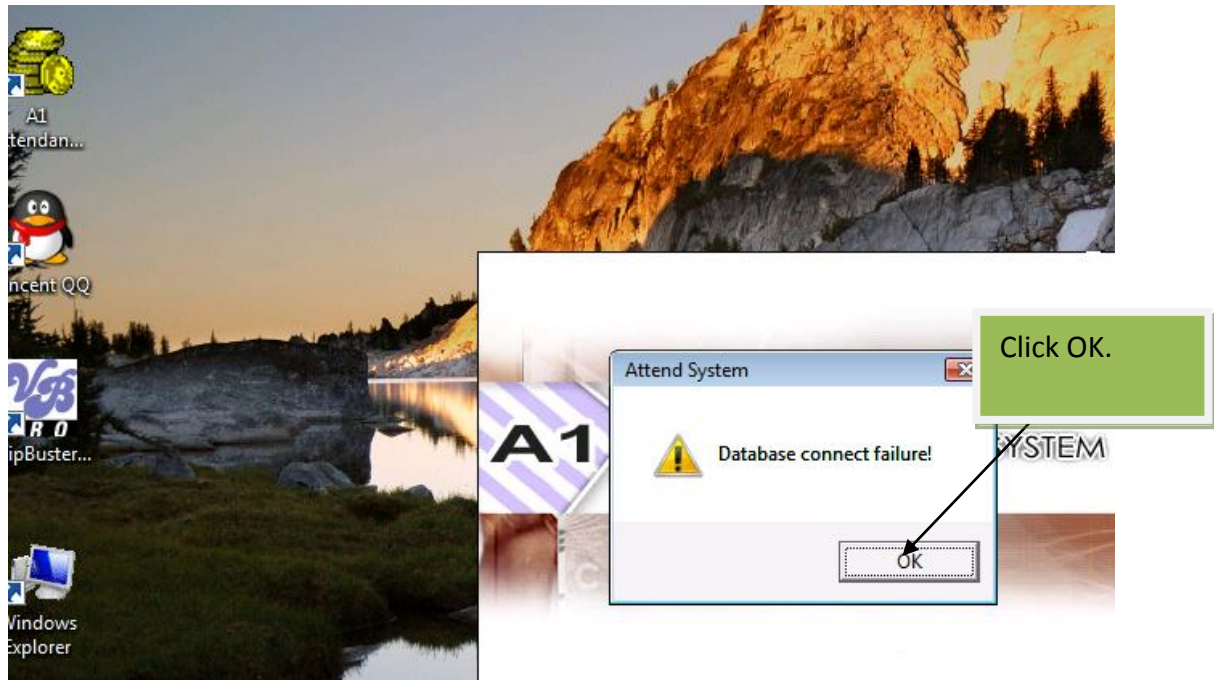
30.

IMPORTANT: when you run A1 the very first time, and start it in the future, follow the instructions below:

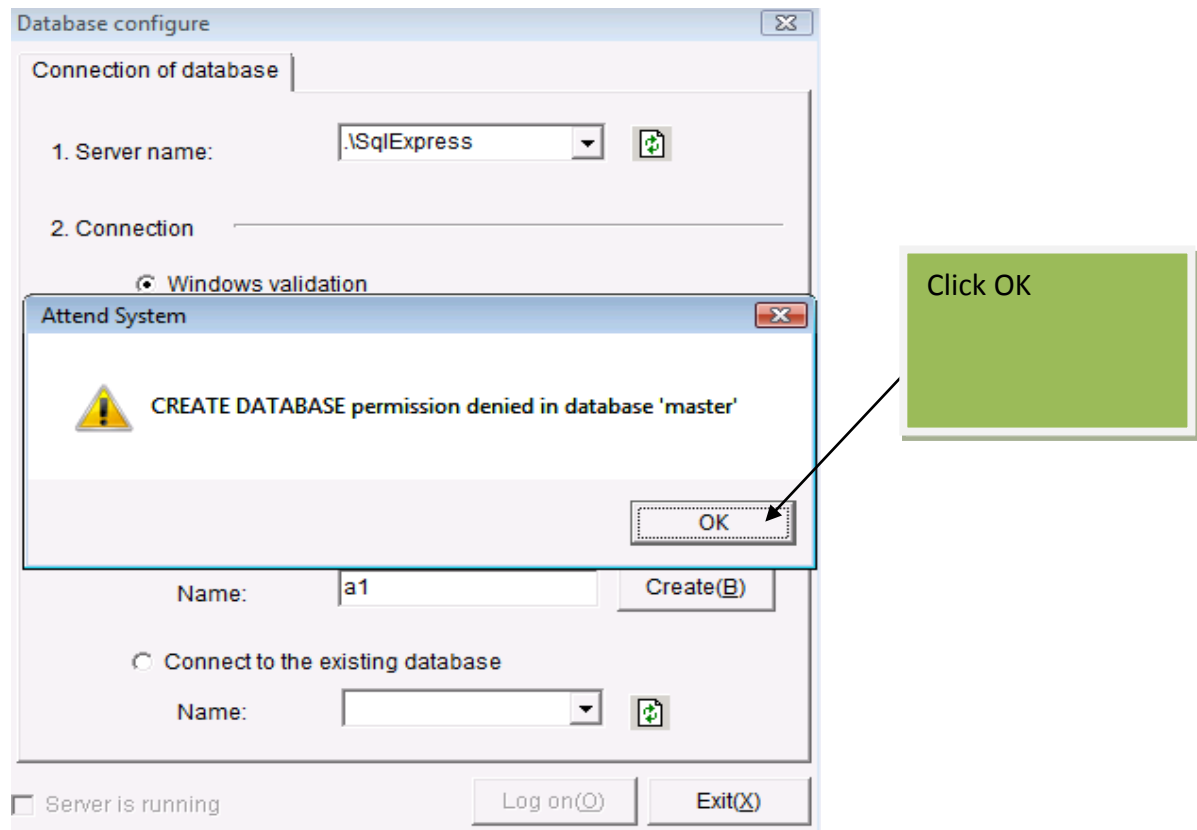


31

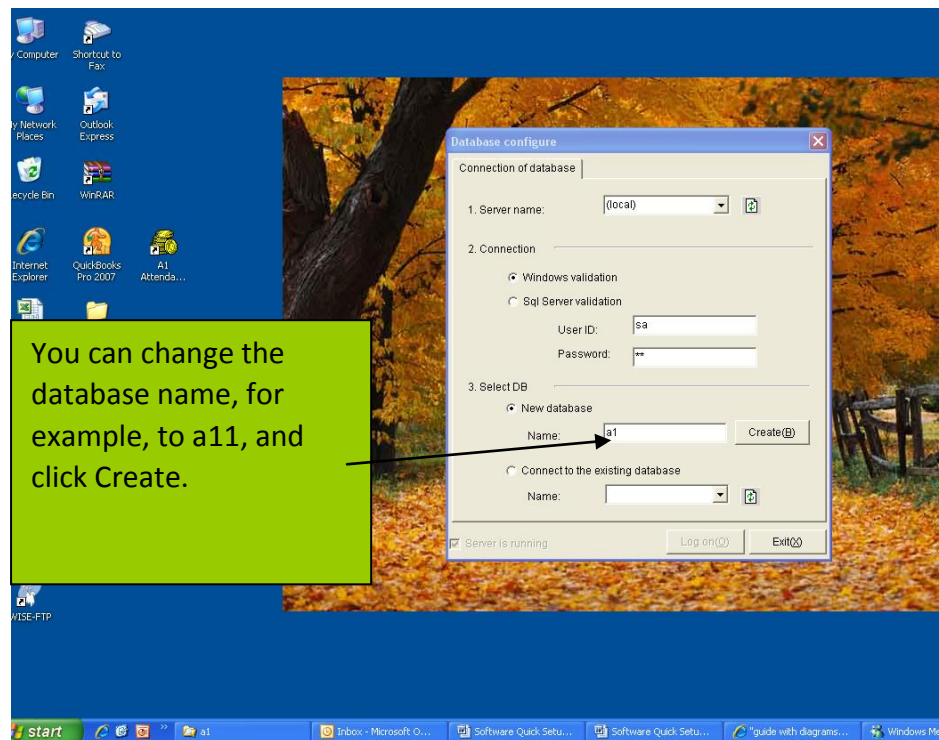
If you happen to encounter the following:



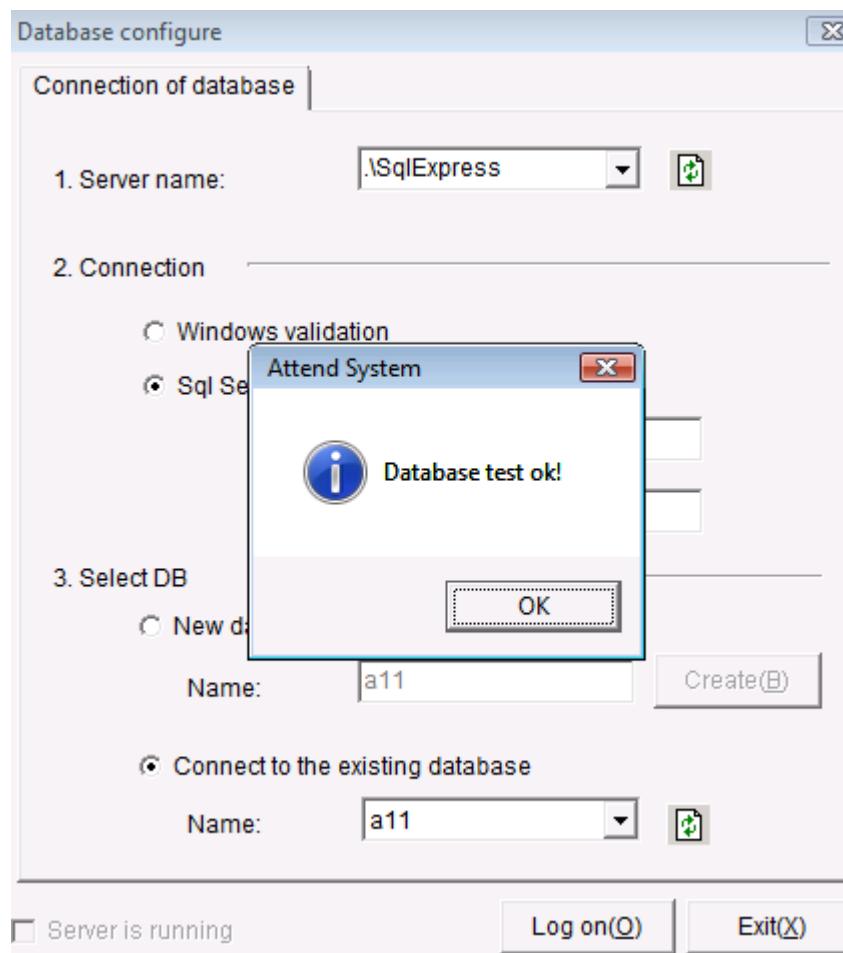
32.



33.



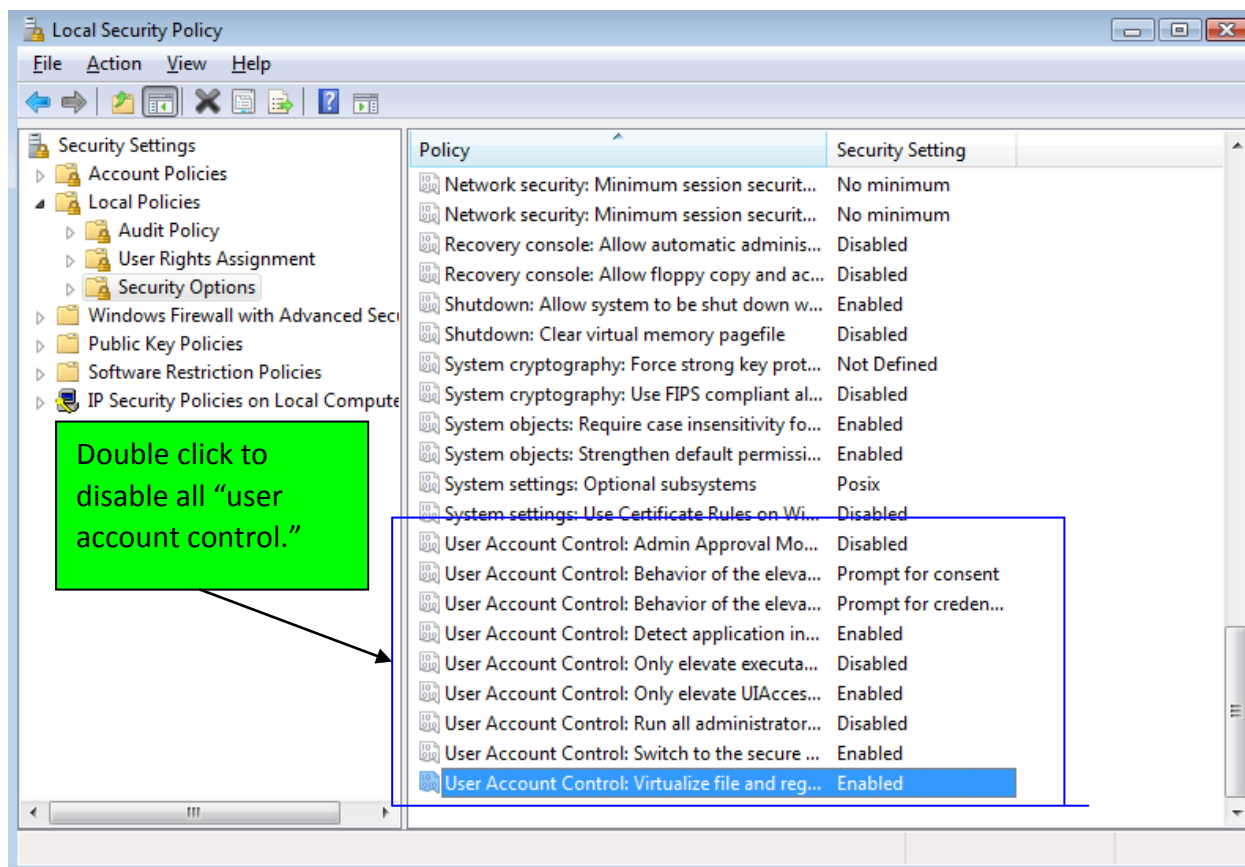
34.



Trouble Shooting:

If you can enter the program but can not do personnel entry, follow the instructions below:

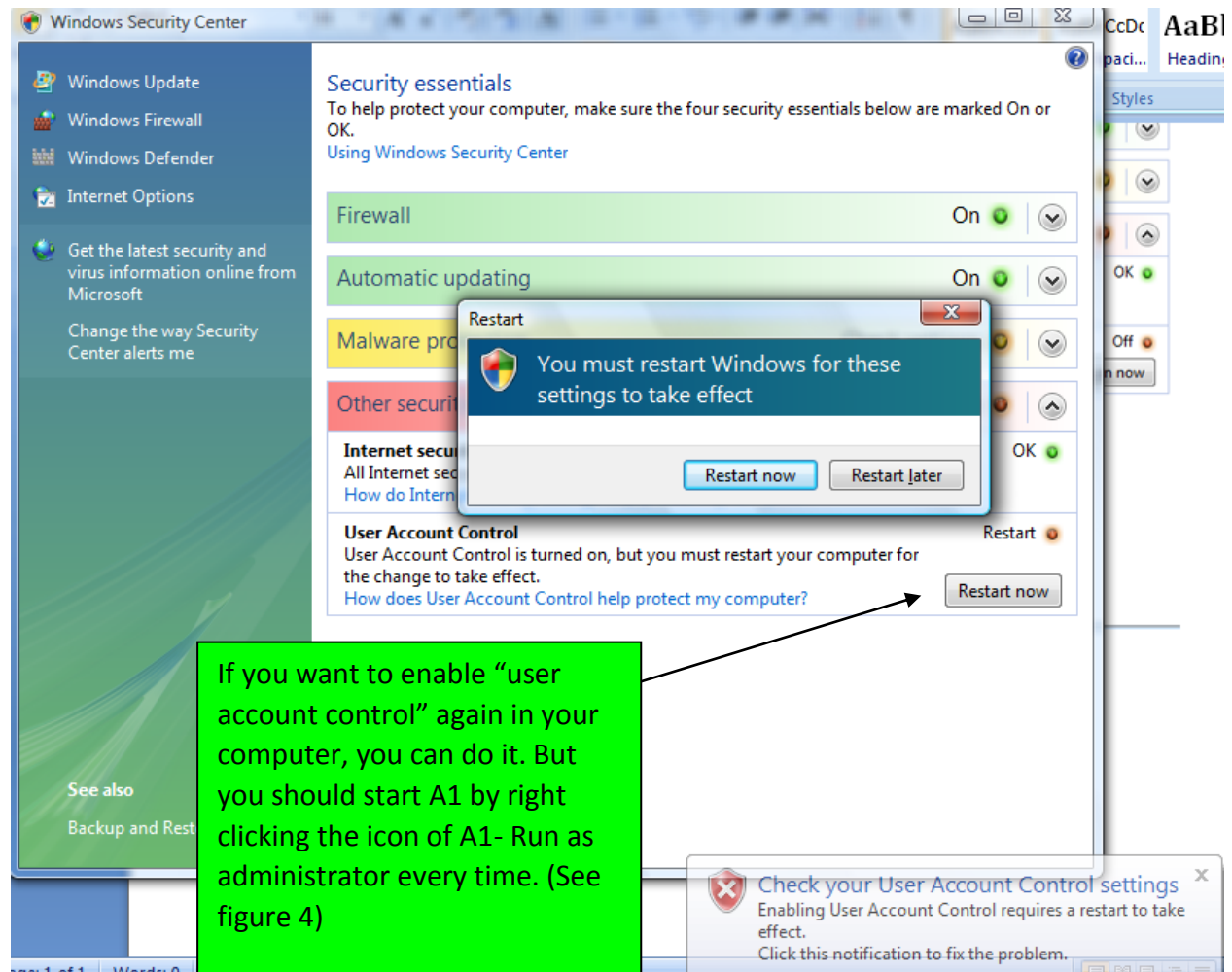
1. Go to control panel-administrative tools-local security policy:



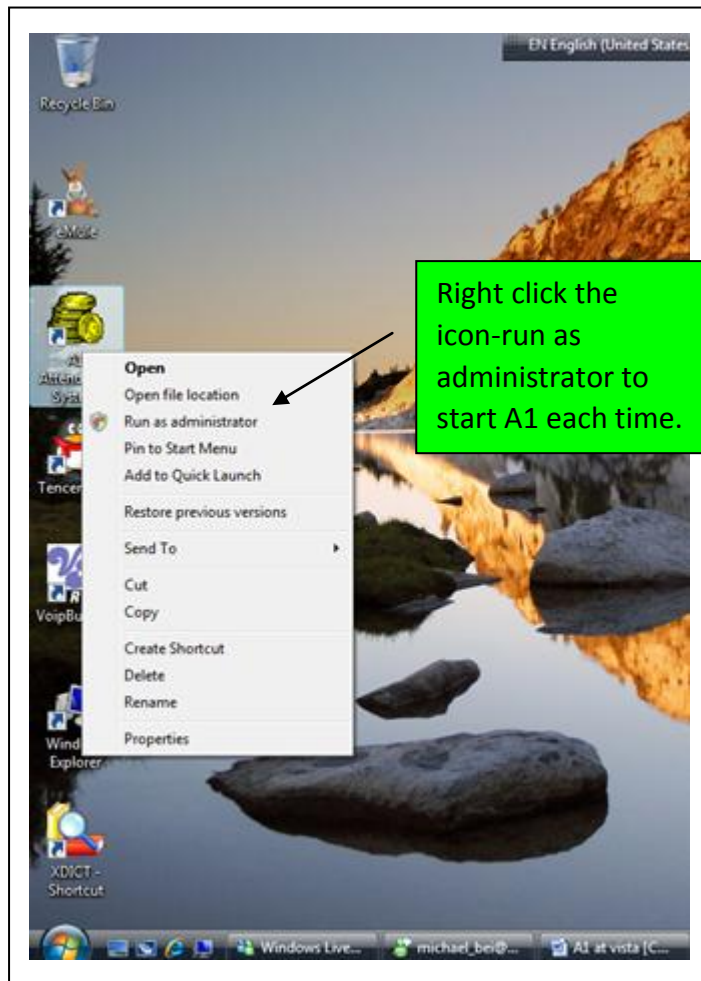
2. Go to C:/program files/MIS/A1/Equ, double click InstallOCX.bat to register OCX. Restart the computer.

3. Now you should be able to do personnel entry.

If you want to enable "User Account control" again, you can do it as follows. But you shall right click the icon of A1 on the desktop- to start A1 every time in the future.



4.



5. If you have already uninstalled A1, please reinstall it. When run it for the **first** time, you should right click the icon of A1 on the desktop—click Run as administrator to do database connection. In this way, OCX can be automatically installed. In the future, follow figure 4 to start A1 every time.

How to uninstall Microsoft SQL server 2005 express edition:

I. go to control panel- programs and features:

To uninstall a program, select it from the list and then click "Uninstall", "Change", or "Repair".

Name	Publisher	Installed On
Adobe Flash Player ActiveX	Adobe Systems Incorporated	4/9/2008
Google Pinyin IME	Google Inc.	4/9/2008
Google Toolbar for Internet Explorer	Google Inc.	4/9/2008
Microsoft Office Enterprise 2007	Microsoft Corporation	4/9/2008
Microsoft SQL Server 2005	Microsoft Corporation	4/9/2008
Microsoft SQL Server Native Client	Microsoft Corporation	4/9/2008
Microsoft SQL Server Setup Support Files (English)	Microsoft Corporation	4/9/2008
Microsoft SQL Server VSS Writer	Microsoft Corporation	4/9/2008
NVIDIA Drivers	Microsoft Corporation	4/9/2008
QQ2005 Formal	Microsoft Corporation	4/9/2008
StormPlayer	Microsoft Corporation	4/9/2008
VoipBusterPro	Microsoft Corporation	4/9/2008
Windows Live installer	Microsoft Corporation	4/9/2008
Windows Live Messenger	Microsoft Corporation	4/9/2008
Windows Live Sign-in Assistant	Microsoft Corporation	4/9/2008

Select it and uninstall.

Uninstall microsoft SQL server Native Client as well.

Component Selection
Select SQL Server 2005 components to uninstall.

To uninstall existing components, select components to remove and click Next.

Remove SQL Server 2005 instance components
Select an instance:
 SQLEXPRESS: Database Engine

Remove SQL Server 2005 common components
 Workstation Components

Check both. Then click Next.

II.

Microsoft SQL Server 2005 Setup

Setup Progress
The selected components are being configured

Product

- SQL Setup Support Files
- SQL VSS Writer
- SQL Server Database Services
- Workstation Components, Books O

Status
Validating install
Please wait...

Microsoft SQL Server 2005 Setup

The following applications should be closed before continuing the install:

SQL Server (SQLEXPRESS) (Process Id: 744)

Retry Ignore Cancel

If you see this message, go to figure III, stop the server, and come back to click Retry.

III. Right click computer-Manager-and you see the following figure:

